

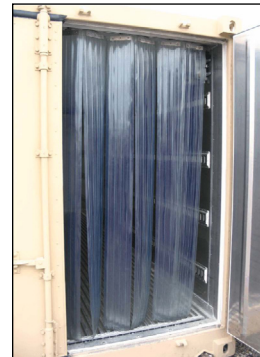


SEA BOX[®]

10ft Large Field Refrigerated System (LFRS)



Double swing doors with escape hatch



Air Curtain



Stainless steel interior lining

STANDARD PRODUCT FEATURES

- Double swing doors with tethered padlock
- Sliding Air curtain
- Emergency escape hatch
- Aluminum T-grade floors
- Stainless steel interior lining
- Four (4) rows of "E" Track cargo restraint system along interior side walls of container (these may all be used for numerous tie downs)
- Six (6) floor cargo tie downs (close to each wall)
- Six (6) wall cargo tie downs high up on both walls (24 total tie downs)
- One (1) Interior light, works on 110 or 460 VAC
- Forklift pockets (1 sets)
- Access steps to non-slip roof
- Pressure relief port installed in rear cargo door panel, for air transport
- Carrier refrigerated machinery features electrical supply as follows:
Dual Voltage 208/230 or 460 Volts AC, 3 phase, 50/60hz
- Temperature range from -22°F to +86°F
- CARC Tan Exterior Paint

ALL NEW CONTAINERS ARE MANUFACTURED TO THE LATEST ISO STANDARD FOR NINE (9) HIGH STACKING

	LENGTH		HEIGHT		WIDTH		DOOR OPENING	
	Exterior	Interior	Exterior	Interior	Exterior	Interior	Height	Width
Ft in	9' 9 3/4"	6' 11 5/16"	8' 0"	6' 11 5/16"	8' 0"	7' 5 1/16" 6	6' 9 3/4"	7' 6 5/16"
Metric	2,991	2,116	2,438	2,116	2,438	2,262	2,077	2,290

	TARE WEIGHT w/ MACHINE	PAYLOAD	GROSS WEIGHT	CUBIC CAPACITY	THERMAL LEAKAGE = U MAX @ 10°C MEAN TEMP
Lbs	5,511	20,944	26,455	400 Cu. Ft.	28.2 BTU/hr.°F
Kgs	2,500	9,500	12,000	11.32 Cu. M.	12.9 Kcal/hr.°C

ALL DIMENSIONS AND WEIGHTS ARE NOMINAL AND SUBJECT TO MINOR VARIATIONS THAT MAY OCCUR DURING THE MANUFACTURING PROCESS

