



SEA BOX[®]

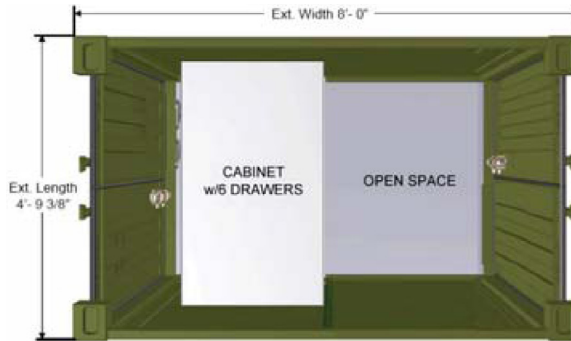
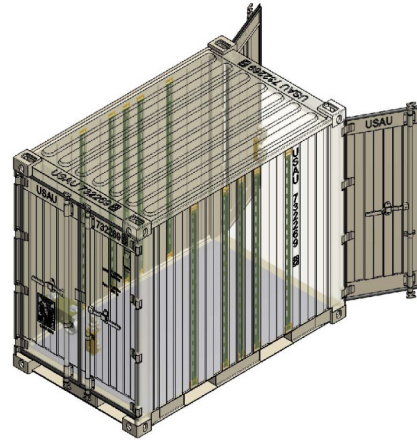
Quadcon Dry Freight ISO Cargo Container with 1 Cabinet and 6 Drawers

SB812-CT1-6D-DLA
 Quadcon Dry Freight ISO Cargo Container
 with 1 Cabinet and 6 Drawers

PRODUCT FEATURES

STANDARD FEATURES

- Corrugated steel sides, roof + swing doors on both sides
- (4) way fork lift pockets
- (1) heavy duty steel Stanley Vidmar Cabinets with 6 Drawers each
- Wall tie down steel lashing rings, 2,000 lbs. capacity (20) total
- Adjustable shelving A-track, (4) sets: (10) vertical A-Track sections
- (5) Top Lashing rings
- (5) Bottom Lashing rings
- Customer choice exterior/interior paint color



OPTIONAL FEATURES

- Transverse shelf halves with (1) set of (4) shelf brackets
- Shoring and Decking beams
- Web straps with ratchets
- (3) connecting coupler with bracket

NSN #: 8150-01-500-5873

122110-R00

ALL NEW CONTAINERS ARE MANUFACTURED TO THE LATEST ISO STANDARD

	LENGTH		HEIGHT		WIDTH		DOOR OPENING	
	Exterior	Interior	Exterior	Interior	Exterior	Interior	Height	Width
Ft in	4' 9 3/8"	4' 7 7/8"	6' 10"	6' 2 3/8"	8' 0"	7' 6 9/16"	5' 11 3/16"	4' 5 5/8"
Metric	1,457	1,419	2,082	1,889	2,438	2,300	1,808	1,362

	TARE WEIGHT	PAYLOAD	GROSS WEIGHT	CUBIC CAPACITY
Lbs	3,019	8,181	11,200	217.8 Cu. Ft.
Kgs	1,369	3,711	5,080	6.17 Cu.M.

ALL DIMENSIONS AND WEIGHTS ARE NOMINAL AND SUBJECT TO MINOR VARIATIONS THAT MAY OCCUR DURING THE MANUFACTURING PROCESS

ISO 9001:2008



CERTIFIED QUALITY
 MANAGEMENT SYSTEM