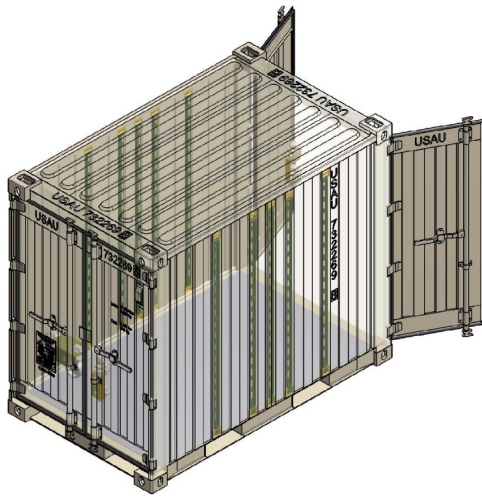




SEA BOX®

COMMON 12 Quadcon Dry Freight ISO Cargo Container

SB812-SG-COM12
COMMON 12 Quadcon Dry Freight
ISO Cargo Container



PRODUCT FEATURES

STANDARD FEATURES

- Corrugated steel sides, roof + swing doors on both sides
- (4) way fork lift pockets
- Back-to-Back heavy duty steel Cabinets with 6 Drawers each
- Wall tie down steel lashing rings, 2,000 lbs. capacity (20 total)
- Adjustable shelving A-track (4) sets: (10) vertical A-track sections (5 per side)
- (2) each Caster Wheel storage brackets, holds (2) casters each
- (2) each Container Coupler Storage Bracket, hold (2) couplers each
- (2) Vents (one per door panel)
- OD Green #34088 exterior, Sea Foam Green #24533 interior paint
- Quadcon containers are manufactured to ISO standards for 9 high stacking
- Dry freight container, all Corten Steel Monocoque construction

- Conforming to ISO 668 + 1496 CSC Certified

OPTIONAL FEATURES

- (2) Full size shelving system provides
- (4) each transverse shelf halves, with non-slip polyurea surface coating with 16 shelf brackets
- (8) each recessed tie down bars per shelf half
- Each full size shelving system is rated at 550 lbs. capacity
- (2) each Shoring and Deck beams
- (32) each Web Straps with ratchets 48" L x 1" W, 700 lbs. SWL
- (4) each Caster Wheels, (2) swivel & (2) fixed 9" diameter wheel, 1/2" thick Polyurethane band
- 3,000 lbs. working load each, 12,000 lbs. capacity total
- All equipped with brakes and twist locks
- (4) each Container Coupler (Horizontal Twistlocks)
- Additional Transverse Shelf Halves with 1 set of 4 shelf brackets
- Additional Shoring and Decking beams
- Additional Web Straps with ratchets
- Tow Bar

ALL NEW CONTAINERS ARE MANUFACTURED TO THE LATEST ISO STANDARD

	LENGTH		HEIGHT		WIDTH		DOOR OPENING	
	Exterior	Interior	Exterior	Interior	Exterior	Interior	Height	Width
Ft in	4' 9 3/8"	4' 7 7/8"	6' 10"	6' 2 3/8"	8' 0"	7' 6 9/16"	5' 11 3/16"	4' 5 5/8"
Metric	1,457	1,419	2,082	1,889	2,438	2,300	1,808	1,362

	TARE WEIGHT	PAYLOAD	GROSS WEIGHT	CUBIC CAPACITY
Lbs	3,019	8,181	11,200	217.8 Cu. Ft.
Kgs	1,369	3,711	5,080	6.17 Cu.M.

ALL DIMENSIONS AND WEIGHTS ARE NOMINAL AND SUBJECT TO MINOR VARIATIONS THAT MAY OCCUR DURING THE MANUFACTURING PROCESS

092608-R00

ISO 9001:2008



CERTIFIED QUALITY
MANAGEMENT SYSTEM