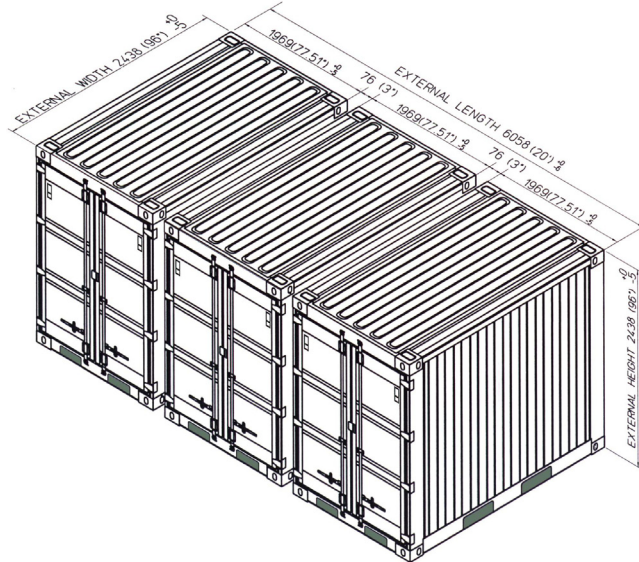
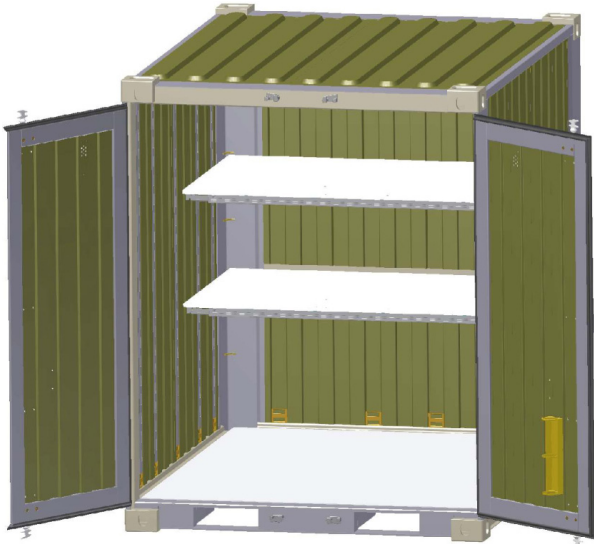




SEA BOX®

Tricon (TYPE I) Dry Freight ISO Cargo Container with 2 Adjustable Transverse Metal Shelves and 4 Shoring and Decking Beams



(3) Tricon Containers coupled together to form (1) 20' ISO module

SB821-0-CT-SH2
Tricon (TYPE I) Dry Freight ISO Cargo Container with 2 Adjustable Transverse Metal Shelves and 4 Shoring and Decking Beams

PRODUCT FEATURES

STANDARD FEATURES

- 2 Adjustable Transverse Metal Shelf halves
- 4 Shoring and Decking Beams - 2,000 lbs cap. each
- Adjustable shelving brackets (5) sets, = (10) vertical E-track sections total
- Corrugated steel sides, roof + swing doors on (1) side
- Heavy duty steel floor
- (4) way fork lift pockets
- Wall tie down steel lashing rings, 4,000 lbs. cap. each (24 total)
- Front corner post tie downs (10 total)

- Door corner post tie downs (10 total) = restraint system, shoring slot will support 2" x 6" lumber
- Vents, (2) each
- Connecting couplers, (3) per Tricon
- Connecting coupler storage bracket (1) each
- Exterior paint CARC Tan

OPTIONAL FEATURES

- Manifest box (2) each
- Rack and Cabinet Systems available
- Other paint types and colors available

000000-R00

ALL NEW CONTAINERS ARE MANUFACTURED TO THE LATEST ISO STANDARD

	LENGTH		HEIGHT		WIDTH		DOOR OPENING	
	Exterior	Interior	Exterior	Interior	Exterior	Interior	Height	Width
Ft in	6' 5 1/2"	6' 4"	8' 0"	7' 4 15/16"	8' 0"	7' 7 15/16"	7' 1 1/2"	6' 1 5/8"
Metric	1,969	1,930	2,438	2,259	2,438	2,336	2,172	1,870

	TARE WEIGHT	PAYLOAD	GROSS WEIGHT	CUBIC CAPACITY
Lbs	2,600	12,300	14,900	359.7 Cu. Ft.
Kgs	1,179	5,535	6,760	10.2 Cu.M.

ALL DIMENSIONS AND WEIGHTS ARE NOMINAL AND SUBJECT TO MINOR VARIATIONS THAT MAY OCCUR DURING THE MANUFACTURING PROCESS

ISO 9001:2008



CERTIFIED QUALITY MANAGEMENT SYSTEM