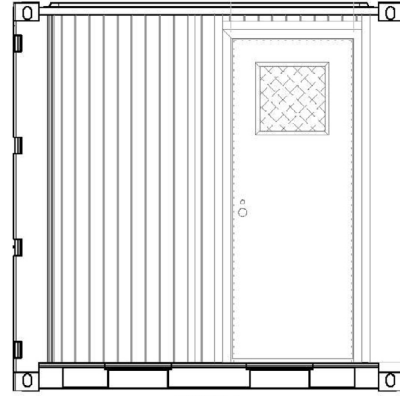
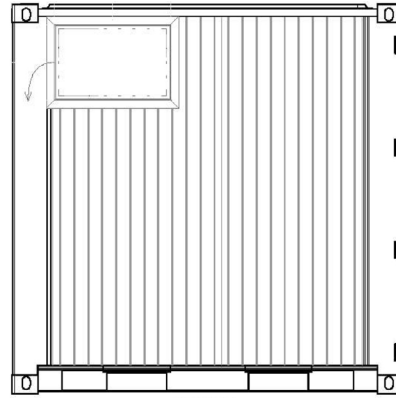




Tricon (TYPE 1) Climate Controlled Storage Container with Additional Access Door & Light



SECTION A
EXTERIOR CURB SIDE ELEVATION VIEW



SECTION B
EXTERIOR ROAD SIDE ELEVATION VIEW

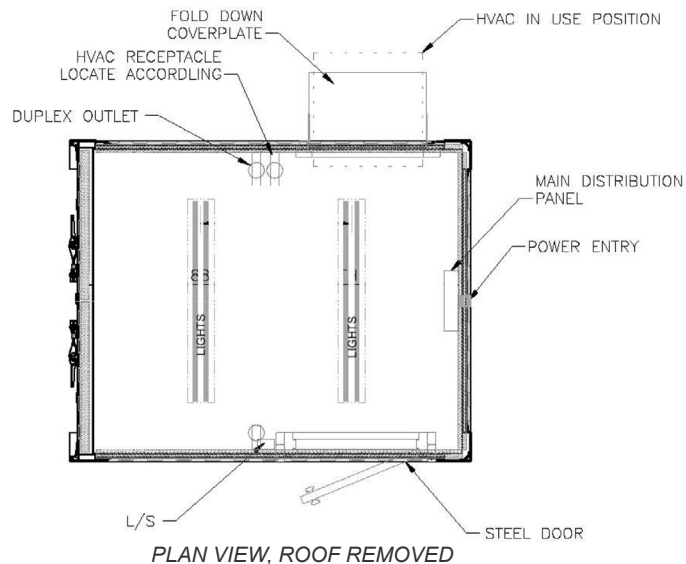
PRODUCT FEATURES

STANDARD FEATURES

- Corrugated steel sides, roof + swing doors on both sides
- Heavy duty steel floor
- (4) way fork lift pockets
- Connecting couplers, (3) per Tricon
- Connecting coupler storage bracket (1) each
- (1) 30" x 80" high steel personnel door with (1) 16" x 16" window
- (1) reinforced cutout frame for a window mount unit, (1) cover plate installed for overseas shipping
- 1 1/2" foam insulation and 3/8" OSB board with white textured lining
- (1) Grainger ES12 (part # 3DU31), 208 A/C volt, single phase, 11988 BTU cooling, 8900 BTU heat
- Electrical & Lighting package: light fixtures, circuit, switch, distribution panel, and receptacles
- Ext. Paint Color Choice of OD Green or Standard Tan

OPTIONAL FEATURES

- STANLEY VIDMAR cabinets, shelves, and desks



PLAN VIEW, ROOF REMOVED

SB821-0-0P
Tricon (TYPE 1) Climate Controlled Storage Container with Additional Access Door & Light

061808-R00

ISO 9001:2008



CERTIFIED QUALITY MANAGEMENT SYSTEM

CONTRACT # GS-02F-0024P
GSA Advantage!

ALL NEW CONTAINERS ARE MANUFACTURED TO THE LATEST ISO STANDARD

ALL DIMENSIONS AND WEIGHTS ARE NOMINAL AND SUBJECT TO MINOR VARIATIONS THAT MAY OCCUR DURING THE MANUFACTURING PROCESS