



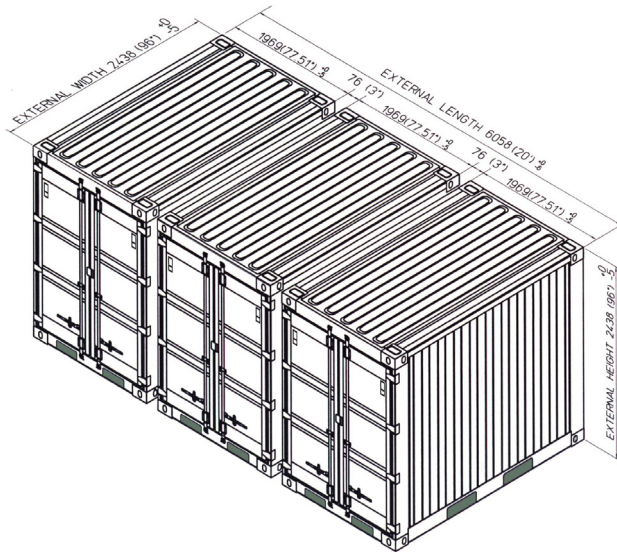
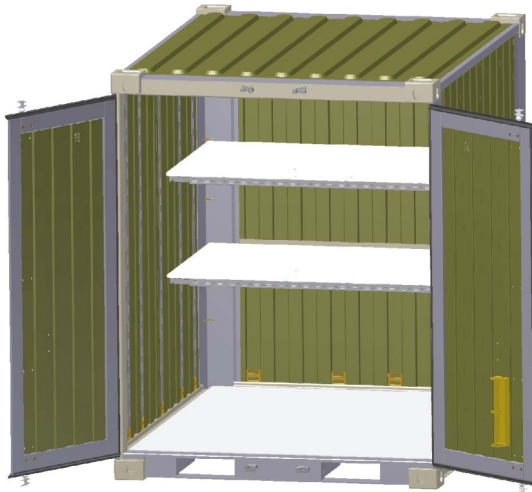
## Tricon (TYPE I) Dry Freight ISO Cargo Container with 2 Adjustable Transverse Metal Shelves and 4 Shoring and Decking Beams

**SB821-0-ST-SH2**  
 Tricon (TYPE I) Dry Freight ISO Cargo Container with 2 Adjustable Transverse Metal Shelves and 4 Shoring and Decking Beams

### PRODUCT FEATURES

#### STANDARD FEATURES

- 2 Adjustable Transverse Metal Shelf halves
- 4 Shoring and Decking Beams - 2,000 lbs cap. each
- Adjustable shelving brackets (5) sets, = (10) vertical E-track sections total
- Corrugated steel sides, roof + swing doors on (1) side
- Heavy duty steel floor
- (4) way fork lift pockets
- Wall tie down steel lashing rings, 4,000 lbs. cap. each (24 total)
- Front corner post tie downs (10 total)
- Door corner post tie downs (10 total) = restraint system, shoring slot will support 2" x 6" lumber
- Vents, (2) each
- Connecting couplers, (3) per Tricon
- Connecting coupler storage bracket (1) each
- Exterior paint Standard Tan



(3) Tricon Containers coupled together to form (1) 20' ISO module

#### OPTIONAL FEATURES

- Manifest box (2) each
- Rack and Cabinet Systems available
- Other paint types and colors available

NSN # 8145-01-504-6892

000000-R00

### ALL NEW CONTAINERS ARE MANUFACTURED TO THE LATEST ISO STANDARD

	LENGTH		HEIGHT		WIDTH		DOOR OPENING	
	Exterior	Interior	Exterior	Interior	Exterior	Interior	Height	Width
<b>Ft in</b>	6' 5 1/2"	6' 4"	8' 0"	7' 4 15/16"	8' 0"	7' 7 15/16"	7' 1 1/2"	6' 1 5/8"
<b>Metric</b>	1,969	1,930	2,438	2,259	2,438	2,336	2,172	1,870

	TARE WEIGHT	PAYLOAD	GROSS WEIGHT	CUBIC CAPACITY
<b>Lbs</b>	2,600	12,300	14,900	359.7 Cu. Ft.
<b>Kgs</b>	1,179	5,535	6,760	10.2 Cu. M.

ALL DIMENSIONS AND WEIGHTS ARE NOMINAL AND SUBJECT TO MINOR VARIATIONS THAT MAY OCCUR DURING THE MANUFACTURING PROCESS

ISO 9001:2008



CERTIFIED QUALITY MANAGEMENT SYSTEM