



SEA BOX®

Double Doors Both Sides (TYPE 2) Tricon Dry Freight ISO Cargo Container

SB822.0-CT8-4RO-ST.DLA
 Double Doors Both Sides (TYPE 2)
 Tricon Dry Freight ISO Cargo Container

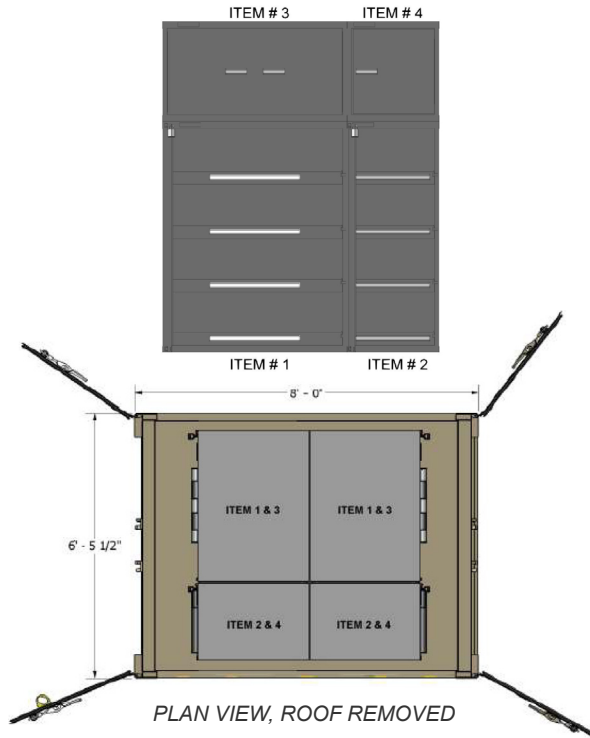
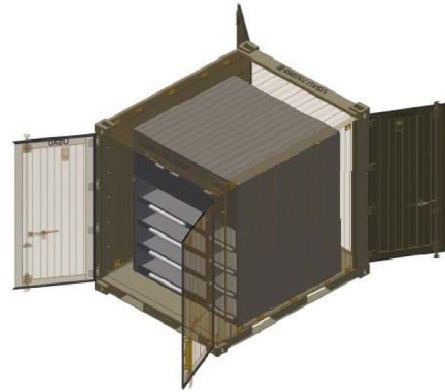
STANDARD FEATURES

CONTAINER

- Corrugated steel sides, roof + swing doors on both sides
- Heavy duty steel floor
- (4) way fork lift pockets
- Vents, (2) each
- Connecting couplers, (3) per Tricon
- Connecting coupler storage bracket (1) each
- Ext. Paint Color Desert Tan

CABINETS

- Featuring Stanley Vidmar Cabinets designed for mobile transport, all with LIFETIME Warranty
- 2 each 45" Wide Base Cabinet with 4 Roll Out Shelves
- 2 each 22.5" Wide Base Cabinet with 4 Roll Out Shelves
- 2 each 22.5" Wide Top with 1 Swing Door
- 2 each 45" Wide Top with 2 Swing Doors
- Modular Cabinet Design for Maximum Flexibility and Interchangeability
- Superior Quality and Construction
- Custom configurations upon request



ALL NEW CONTAINERS ARE MANUFACTURED TO THE LATEST ISO STANDARD

Tricon	LENGTH		HEIGHT		WIDTH		DOOR OPENING	
	Exterior	Interior	Exterior	Interior	Exterior	Interior	Height	Width
Ft in	6' 5 1/2"	6' 4"	8' 0"	7' 4 15/16"	8' 0"	7' 7 15/16"	7' 1 1/2"	6' 1 5/8"

Tricon	TARE WEIGHT w/ CABINETS	PAYLOAD	GROSS WEIGHT
Lbs.	3,700	11,200	14,900

ITEM	QTY	MODEL	WIDTH	DEPTH	HEIGHT
1	2	XW0340	45.00"	27.75"	57.00"
2	2	SV0340	22.50"	27.75"	57.00"
3	2	XW0135	45.00"	27.75"	25.00"
4	2	SV0135	22.50"	27.75"	25.00"

ALL DIMENSIONS AND WEIGHTS ARE NOMINAL AND SUBJECT TO MINOR VARIATIONS THAT MAY OCCUR DURING THE MANUFACTURING PROCESS

000000-R00

ISO 9001:2008



CERTIFIED QUALITY
MANAGEMENT SYSTEM

CONTRACT # GS-02F-0024P
GSA Advantage!™