



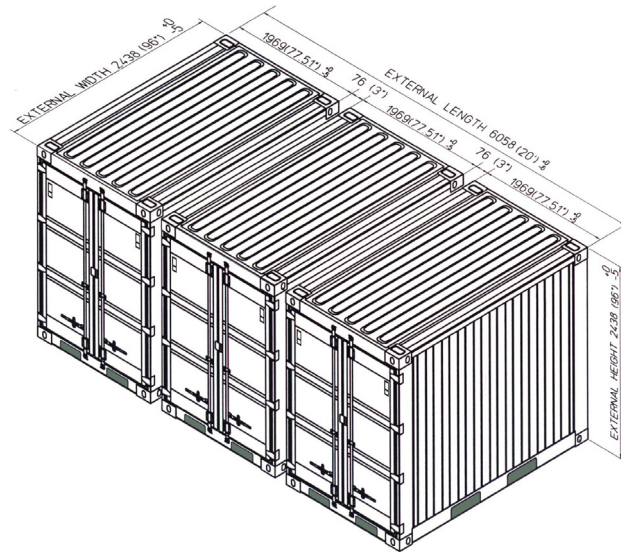
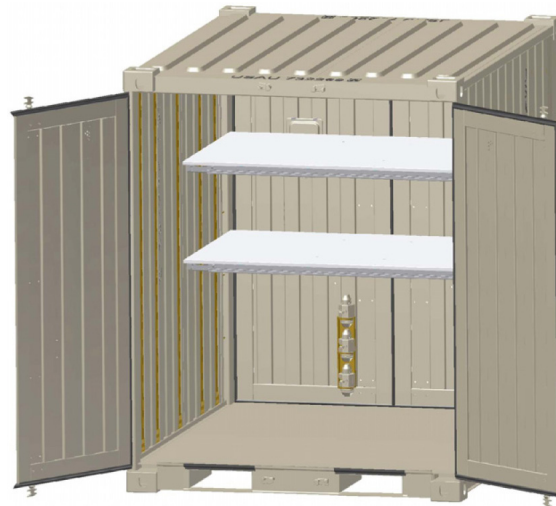
Tricon (Type II) Dry Freight ISO Cargo Container with 2 Adjustable Transverse Metal Shelves and 4 Shoring and Decking Beams

SB822.0-ST-SH2
 Tricon (Type II) Dry Freight ISO Cargo Container with 2 Adjustable Transverse Metal Shelves and 4 Shoring and Decking Beams

PRODUCT FEATURES

STANDARD FEATURES

- Corrugated steel sides, roof and swing doors on both sides
- Heavy duty steel floor
- (4) way fork lift pockets
- Wall tie down steel lashing rings, 4,000 lbs. cap. Each (16) total
- Door corner post tie downs (20) total = restraint system, shoring slot will support 2" x 6" lumber
- Vents, (2) each
- Manifest box, (2) each
- Connecting couplers, (3) per Tricon
- Connecting coupler storage bracket, (1) each
- Adjustable shelving brackets, (5) sets: (10) vertical E-Track sections total
- (4) each, load bars, 2,000 lbs. cap. Each
- (2) each, Adjustable Transvers Metal Shelf halves
- Tan exterior paint



032811-R00

ALL NEW CONTAINERS ARE MANUFACTURED TO THE LATEST ISO STANDARD

	LENGTH		HEIGHT		WIDTH		DOOR OPENING	
	Exterior	Interior	Exterior	Interior	Exterior	Interior	Height	Width
Ft in	6' 5 1/2"	6' 4"	8' 0"	7' 4 15/16"	8' 0"	7' 6 9/16"	7' 1 1/2"	6' 1 5/8"
Metric	1,969	1,930	2,438	2,259	2,438	2,300	2,172	1,870

	TARE WEIGHT	PAYLOAD	GROSS WEIGHT	CUBIC CAPACITY
Lbs	2,800	12,100	14,900	354.2 Cu. Ft.
Kgs	1,270	5,490	6,760	10.03 Cu. M.

ALL DIMENSIONS AND WEIGHTS ARE NOMINAL AND SUBJECT TO MINOR VARIATIONS THAT MAY OCCUR DURING THE MANUFACTURING PROCESS

ISO 9001:2008



CERTIFIED QUALITY MANAGEMENT SYSTEM