



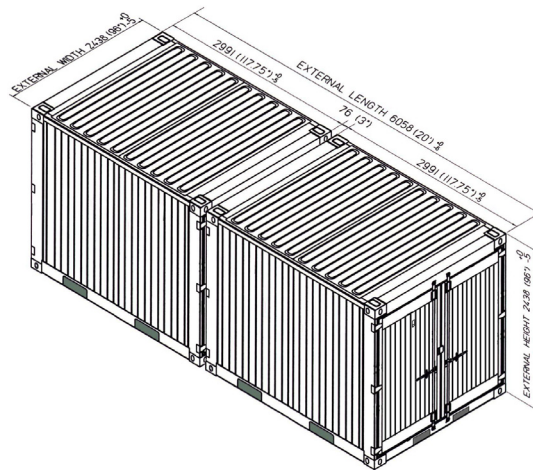
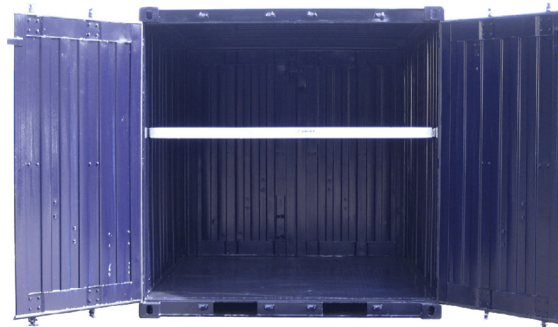
SEA BOX®

10' X 8' Bicon (TYPE 2) ISO Container Double Doors Both Ends

SB842.0.SB.3LST.FTDR
 10' X 8' Bicon (TYPE 2) ISO Container
 Double Doors Both Ends

STANDARD PRODUCT FEATURES

- LOWEST TARE WEIGHT and LARGEST CUBIC CAPACITY for any Bicon TYPE 2
- Full-width cargo access doors on both ends of the container, (swing out a full 270 degrees for ease of loading)
- (4) way fork lift pockets
- (12) each floor level steel tie down lashing rings (12) each top side rail, steel, articulated floor tie down lashing rings, all lashing rings are 4,000 lbs. cap. each (24) total
- (2) each Door sill, recessed floor tie down steel lashing rings, 2 per door 18" in, 4,000 lbs. cap. each (4) total
- (12) total vertical logistics tracks ("A" or "E" series)
- (1) Full size shelving system provides (4) each longitudinal shelf quarter
- Non-Absorbing Composite shelves
- Each full size shelving system is rated at 2,000 lbs. cap.
- (6) each Shoring and Deck beams
- Connecting couplers, (2) per Bicon
- Connecting coupler storage bracket (1) each
- Vents, (2) each
- BLUE Exterior Paint
- All new containers are manufactured to the latest ISO standards for 9 high stacking
- Dry freight container, all corten steel monocoque construction
- Conforming to ISO 668 + 1496 CSC Certified



OPTIONAL PRODUCT FEATURES

- Full size shelving systems + 3 shoring and decking beams kit
- Document holder (2) each
- Rack & Cabinet systems
- Web Strap and Ratchet (SB3400)
- Articulated Track Fittings with "D" Ring (SB3410)

NSN # 8145-01-573-7424

(2) Bicon Containers can be coupled together to form (1) 20' ISO module

ALL NEW CONTAINERS ARE MANUFACTURED TO THE LATEST ISO STANDARD

	LENGTH		HEIGHT		WIDTH		DOOR OPENING	
	Exterior	Interior	Exterior	Interior	Exterior	Interior	Height	Width
Ft in	9' 9 3/4"	9' 4 1/4"	8' 0"	7' 5 1/64"	8' 0"	7' 9 23/32"	7' 1 5/32"	7' 8 1/4"
Metric	2,991	2,851	2,438	2,261	2,438	2,381	2,163	2,343

	TARE WEIGHT	PAYLOAD	GROSS WEIGHT	CUBIC CAPACITY
Lbs	3,626	22,834	26,460	542 Cu.Ft.
Kgs	1,644	10,357	12,001	15.3 Cu. M.

ALL DIMENSIONS AND WEIGHTS ARE NOMINAL AND SUBJECT TO MINOR VARIATIONS THAT MAY OCCUR DURING THE MANUFACTURING PROCESS

063010-R00

ISO 9001:2008



CERTIFIED QUALITY MANAGEMENT SYSTEM

CONTRACT # GS-02F-0024P
GSA Advantage!