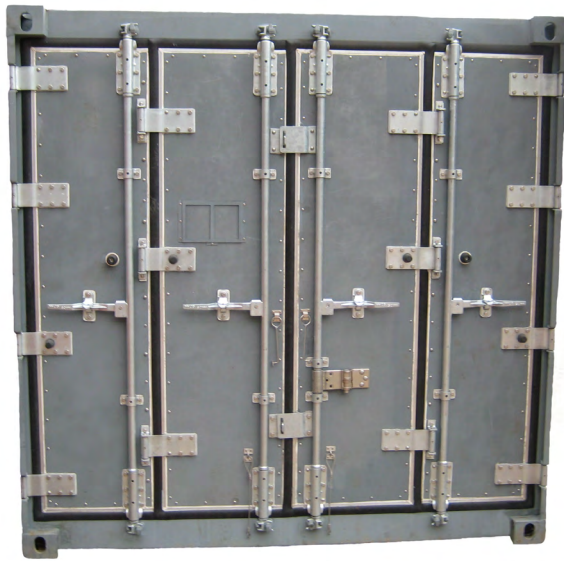




SEA BOX®

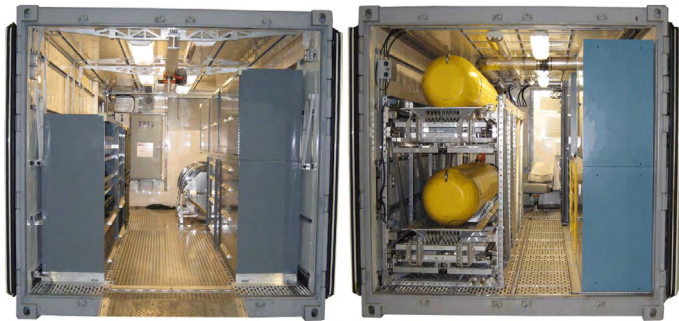
20' x 8'0" Mission Module Container

SB861-0-HSS-MMC
 20' x 8'0" Mission Module Container



STANDARD PRODUCT FEATURES

- Double bi-fold cargo access door on one end
- (1) Double personnel side door, 76" high
- (1) Service panel door on one end, opposite of cargo doors
- Container openings sealed with a continuous gasket
- Insulated interior walls and ceiling (R-8)
- (5) UNISTRUT rails on both container walls
- (5) Recessed UNISTRUT rails on container ceiling and (5) on floor
- Reinforced exterior side walls: 1/16 in, 15 ksi steel
- Exterior Color: Haze Gray MIL-PFR-24635, Type II silicone enamel Fed. Std. 595B, Color Chip No. 26270 at 2 mil MDFT
- Floor grates and drains



20' Container can be used to store, transport, and provide support services to various Mission Module (independent systems) components. Interior integration depicted sold separately.

081214-R02

ALL NEW CONTAINERS ARE MANUFACTURED TO THE LATEST ISO STANDARD

	LENGTH		HEIGHT		WIDTH		DOOR OPENING	
	Exterior	Interior	Exterior	Interior	Exterior	Interior	Height	Width
Ft in	19' 10 1/2"	19' 3"	8' 0"	7' 2 1/2"	8' 0"	7' 7 3/4"	6' 11 21/32"	7' 8 11/64"
Metric	6,060	5,867	2,440	2,197	2,440	2,330	2,125	2,341

	TARE WEIGHT	PAYLOAD	GROSS WEIGHT	CUBIC CAPACITY
Lbs	5,900	9,500	15,400	1,096 Cu.Ft.
Kgs	2,675	4,325	7,000	31 Cu. M.

ALL DIMENSIONS AND WEIGHTS ARE NOMINAL AND SUBJECT TO MINOR VARIATIONS THAT MAY OCCUR DURING THE MANUFACTURING PROCESS

ISO 9001:2008



CERTIFIED QUALITY MANAGEMENT SYSTEM