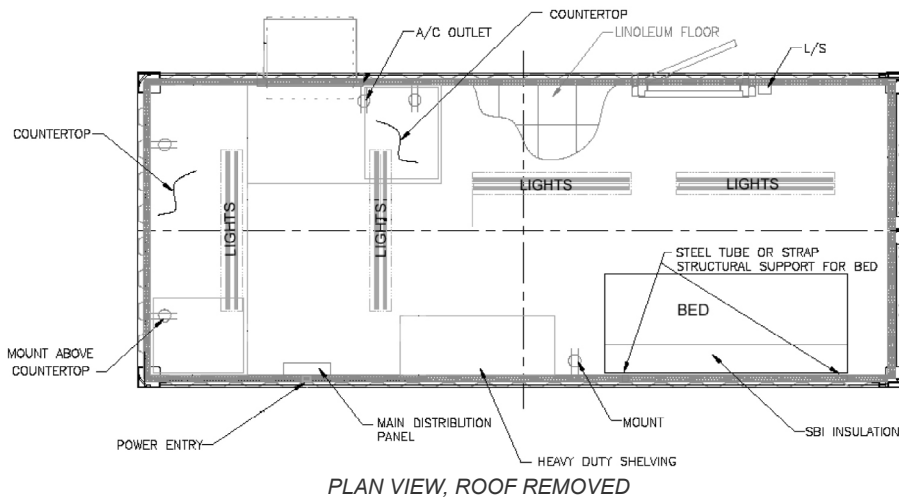
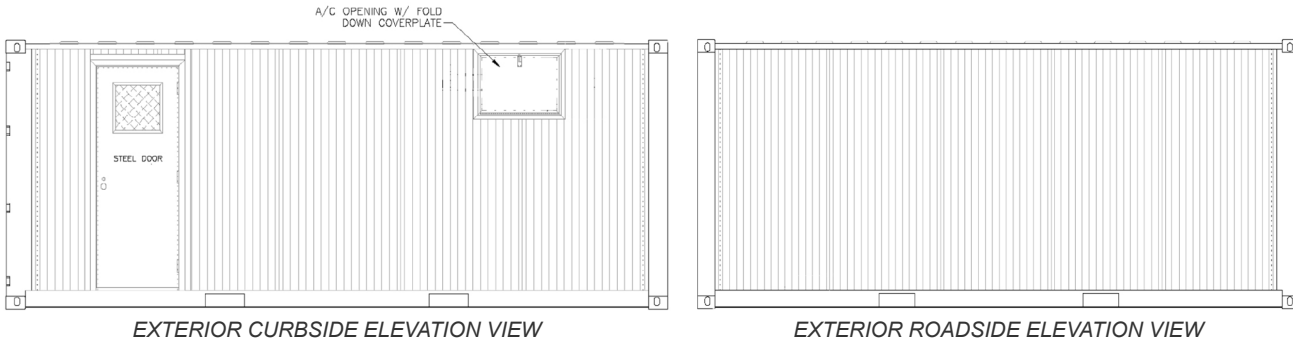




SEA BOX[®]

20' (TYPE 1) ISO Container with Office Package



PRODUCT FEATURES

STANDARD FEATURES

- Corrugated steel sides, roof + swing doors on both sides
- (1) set of unladen forklift pockets
- 30" X 80" personnel door with 16" X 16" window
- (1) Reinforced cutout frame for a window mount A/C unit (coverplate installed for overseas shipping)
- Commercial grade linoleum tile floor
- SBI standard insulation (1 1/2" foam and 3/8" OSB board with white textured plastic lining)
- (1) Frigidaire model FAS155P1A (part # 4CE69) window type A/C, 110 volt single phase, 15,000 BTU cooling
- Electrical and Lighting Package (power entry, main distribution panel, circuit, switch, light fixtures)
- STANLEY VIDMAR cabinets and shelves
- Ext. Paint Color Choice of OD Green or Desert Tan

OPTIONAL FEATURES

- CARC paint



SB861-0.0P
 20' (TYPE 1) ISO Container with Office Package

000000-R00

ISO 9001:2008



CERTIFIED QUALITY
MANAGEMENT SYSTEM

GSA CONTRACT # GS-02F-0024P
Advantage![™]

ALL NEW CONTAINERS ARE MANUFACTURED TO THE LATEST ISO STANDARD

ALL DIMENSIONS AND WEIGHTS ARE NOMINAL AND SUBJECT TO MINOR VARIATIONS THAT MAY OCCUR DURING THE MANUFACTURING PROCESS