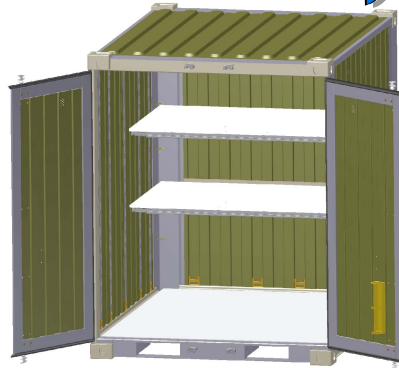


# Sea Box, Inc.®

**CORPORATE OFFICE**  
 802 Industrial Hwy.  
 East Riverton, NJ 08077-1910  
 Tel: (856) 303-1101  
 Fax: (856) 303-1501  
[www.seabox.com](http://www.seabox.com)  
 e-mail: [sales@seabox.com](mailto:sales@seabox.com)



## Tricon (TYPE I) Dry Freight ISO Cargo Container with 2 Adjustable Transverse Metal Shelves and 4 Shoring and Decking Beams

Tricon	Length		Height		Width		Door Opening	
	Exterior	Interior	Exterior	Interior	Exterior	Interior	Height	Width
Feet/Inches	6' 5 1/2"	6' 4"	8' 0"	7' 4 15/16"	8' 0"	7' 7 15/16"	7' 1 1/2"	6' 1 5/8"
Metric	1,969	1,930	2,438	2,259	2,438	2,336	2,172	1,870

Tricon	Tare Weight	Payload	Gross Weight	Cubic Capacity
Lbs.	2,600	12,300	14,900	359.7 Cu. Ft.
Kg.	1,179	5,535	6,760	10.2 Cu. M.

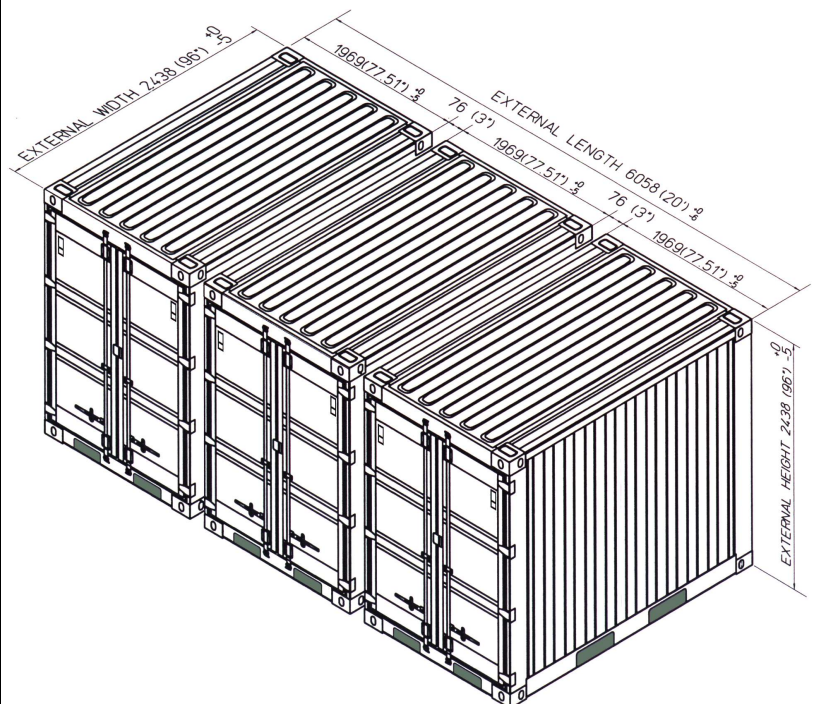
ALL NEW CONTAINERS ARE MANUFACTURED TO THE LATEST ISO STANDARDS FOR 9 HIGH STACKING

### — STANDARD FEATURES —

- ▶ 2 Adjustable Transverse Metal Shelf halves
- ▶ 4 Shoring and Decking Beams - 2,000 lbs cap. each
- ▶ Adjustable shelving brackets (5) sets, = (10) vertical E-track sections total
- ▶ Corrugated steel sides, roof + swing doors on (1) side
- ▶ Heavy duty steel floor
- ▶ (4) way fork lift pockets
- ▶ Wall tie down steel lashing rings, 4,000 lbs. cap. each (24 total)
- ▶ Front corner post tie downs (10 total)
- ▶ Door corner post tie downs (10 total) = restraint system, shoring slot will support 2" x 6" lumber
- ▶ Vents, (2) each
- ▶ Connecting couplers, (3) per Tricon
- ▶ Connecting coupler storage bracket (1) each
- ▶ Exterior paint Standard Tan

### — OPTIONAL FEATURES —

- ▶ Manifest box (2) each
- ▶ Rack and Cabinet Systems available
- ▶ Other paint types and colors available



**PART # SB821.0.ST.SH2**

NSN # 8145-01-504-6892

(3) Tricon Containers coupled together to form (1) 20' ISO module!