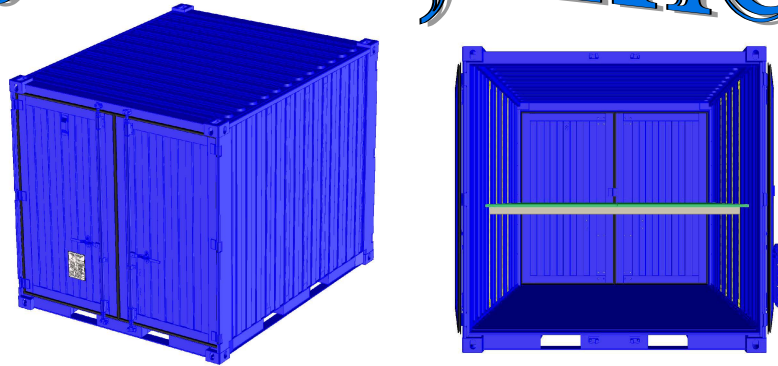


Sea Box, Inc.®

CORPORATE OFFICE
 802 Industrial Hwy.
 East Riverton, NJ 08077-1910
 Tel: (856) 303-1101
 Fax: (856) 303-1501
www.seabox.com
 e-mail: sales@seabox.com



10' X 8' Bicon (TYPE 2) ISO Container Double Doors Both Ends

Bicon	Length		Height		Width		Door Opening	
	Exterior	Interior	Exterior	Interior	Exterior	Interior	Height	Width
Feet/Inches	9' 9 3/4"	9' 4 1/4"	8' 0"	7' 5 1/64"	8' 0"	7' 9 23/32"	7' 1 5/32"	7' 8 1/4"
Metric	2,991	2,851	2,438	2,261	2,438	2,381	2,163	2,343
Bicon	Tare Weight		Payload		Gross Weight		Cubic Capacity	
Lbs.	3,200		23,260		26,460		542 CU.FT.	
Kg.	1,451		10,550		12,001		15.3 CU.M.	

— STANDARD FEATURES —

- ▶ **LOWEST TARE WEIGHT and LARGEST CUBIC CAPACITY** for any Bicon TYPE 2
- ▶ **Full-width cargo access doors on both ends of the container, (swing out a full 270° for ease of loading)**
- ▶ (4) way fork lift pockets
- ▶ (10) each floor level steel tie down lashing rings
- ▶ (10) each top side rail, steel, tie down lashing rings, all lashing rings are 4,000 lbs. cap. each
- ▶ **Door sill, recessed tie down steel lashing rings, 4,000 lbs. cap. each (4) total, 2 per door 18" in**
- ▶ **Adjustable shelving brackets (6) sets:**
 - (12) vertical E-track sections total
 - (1) Full size shelving system provides
 - (3) each longitudinal shelf thirds, **Non-Absorbing Composite shelves**
 - Each full size shelving system is rated at 2,000 lbs. cap.
 - (6) each Shoring and Deck beams
- ▶ Connecting couplers, (2) per Bicon
- ▶ Connecting coupler storage bracket (1) each
- ▶ Vents, (2) each
- ▶ **Standard Blue Exterior Marine Paint Color**

— OPTIONAL FEATURES —

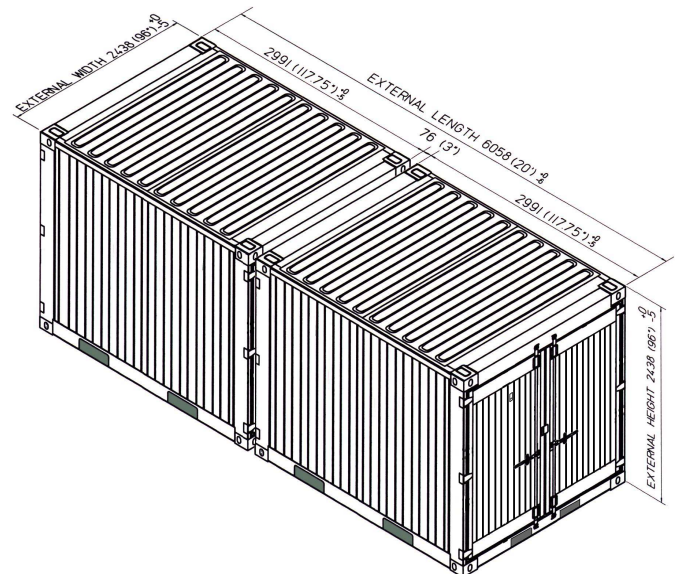
- ▶ **Full size shelving systems + 3 shoring and decking beams kit**
- ▶ **8 total vertical E-Track sections**
- ▶ **10 total vertical E-Track sections**
- ▶ **Document holder (2) each**
- ▶ **Rack & Cabinet systems**



CONTRACT # GS-02F-0024P

ALL NEW CONTAINERS ARE MANUFACTURED TO THE LATEST ISO STANDARDS FOR 9 HIGH STACKING
DRY FREIGHT CONTAINER, ALL CORTEN STEEL MONOCOQUE CONSTRUCTION

CONFORMING TO ISO 668 + 1496 CSC CERTIFIED



(2) Bicon Containers can be coupled together to form (1) 20' ISO module!

PART # SB842.0.SB.3LST