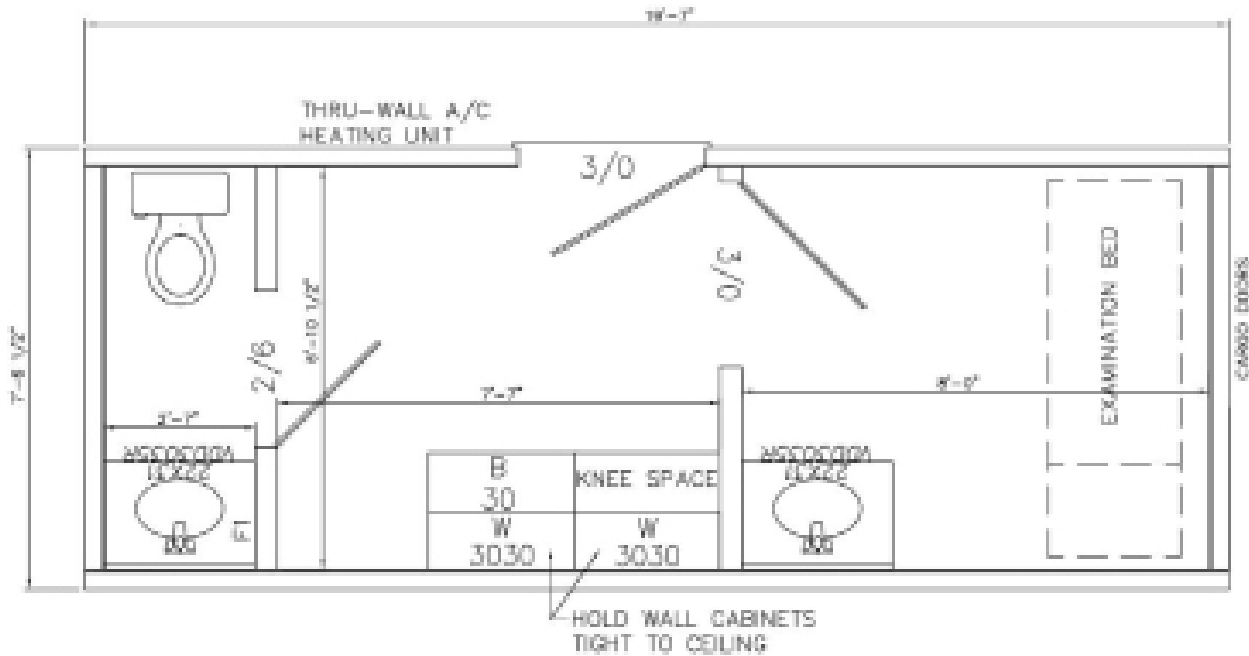




20' X 8' 6" MEDICAL SHELTER

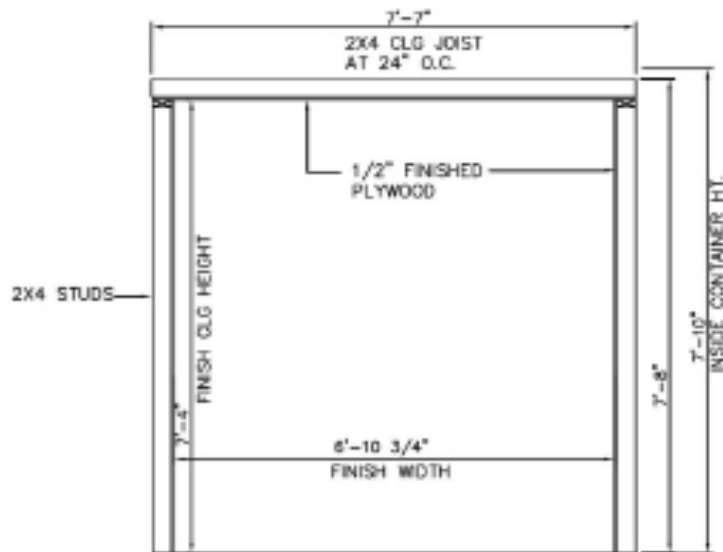
SB861-6-MED-HAB

20' X 8' 6" MEDICAL SHELTER



STANDARD PRODUCT FEATURES

- Medical exam table
- (2) Stainless steel wall sinks
- Mirrors with shelf
- China toilet
- Desk area with file cabinets
- Friedrich air conditioning unit
- Small refrigerator
- Fluorescent lighting
- Tile floor
- Fiberglass panels on interior walls
- R-11 insulation in walls and ceiling
- 100 amp electrical panel
- Exhaust fan
- Smoke and heat detector



021716-R01

ALL NEW CONTAINERS ARE MANUFACTURED TO THE LATEST ISO STANDARD

| | LENGTH | | HEIGHT | | WIDTH | | DOOR OPENING | |
|---------------|----------|----------|----------|------------|----------|-----------|--------------|-------------|
| | Exterior | Interior | Exterior | Interior | Exterior | Interior | Height | Width |
| Ft in | 20' 0" | 19' 1" | 8' 6" | 7' 10 1/4" | 8' 0" | 7' 2 1/2" | 7' 5 11/16" | 7' 8 11/64" |
| Metric | 6,096 | 5,816 | 2,591 | 2,394 | 2,438 | 2,198 | 2,278 | 2,341 |

ALL DIMENSIONS AND WEIGHTS ARE NOMINAL AND SUBJECT TO MINOR VARIATIONS THAT MAY OCCUR DURING THE MANUFACTURING PROCESS

ISO 9001



CERTIFIED QUALITY
MANAGEMENT SYSTEM