

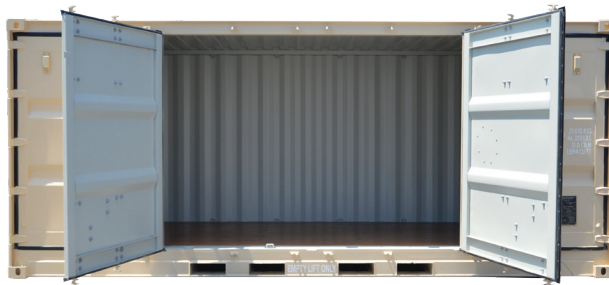


## 20' One Full Side Opening Container International Maritime Dangerous Goods

**SB891.6-IMDG**  
20' One Full Side Opening Container  
International Maritime Dangerous Goods

### STANDARD FEATURES

- Ammunition Grade Side-Opening Container
- (2) sets of forklift pockets, laden and unladen
- 1 1/8" thick marine plywood floors, forklift tested to 16,000 lbs per 44 square inches, ISPM 15 compliant
- Understructure cross members have a maximum center-to-center distance of 12 in. and coated with a bituminous undercoat with a minimum dry film thickness of 6 mils (150 microns)
- Closed side wall has (8) lashing rings at the junction of the closed side wall and bottom rail; each lashing rings vertically mounted and fully welded to the bottom side rail. Each ring is rated at 6,000 lbs at 45 degrees from the vertical. Can accommodate 2 in. wide steel strapping IAW ISO 1496/1
- End walls are rated at full payload (1P) or 2.5 times stronger than standard commercial containers.
- Zinc or Zinc Chromate primer coat
- Enamel, alkyd and semi gloss exterior top coat; FED-STD-595, #23617 (Tan), light grey interior
- Vents, (2) each
- (4) Stainless steel placard holders conforming to DOT standards
- Door opening minimum 170 degrees
- IAW exacting specifications outlined in the International Maritime Dangerous Goods Code (IMDG Code) and 49 Code of Federal Regulation (CFR) 450



NSN#: 8140-01-296-7241

### ALL NEW CONTAINERS ARE MANUFACTURED TO THE LATEST ISO STANDARD

	LENGTH		HEIGHT		WIDTH		DOOR OPENING	
	Exterior	Interior	Exterior	Interior	Exterior	Interior	Height	Width
<b>Ft in</b>	19' 10-1/2"	19' 6-5/16"	8' 6"	7' 5-3/16"	8' 0"	7' 6-11/16"	7'-1/2"	19' 5-3/4"
<b>Metric</b>	6,058	5,952	2,591	2,265	2,438	2,303	2,147	5,938

	TARE WEIGHT	PAYLOAD	GROSS WEIGHT	CUBIC CAPACITY
<b>Lbs</b>	6,600	46,310	52,910	1,094 cu. ft.
<b>Kgs</b>	2,994	21,006	24,000	31.0 cu. m.

ALL DIMENSIONS AND WEIGHTS ARE NOMINAL AND SUBJECT TO MINOR VARIATIONS THAT MAY OCCUR DURING THE MANUFACTURING PROCESS

052423-R00

ISO 9001



CERTIFIED QUALITY  
MANAGEMENT SYSTEM